

# Hip Arthroplasty



 | **EgiFix** |   
m e d i c a l

The partner you trust



## About Us

EgiFix Medical is a leading company in Egypt and the Middle East in the field of manufacturing orthopedic medical implants.

We are dedicated to providing surgeons with a wide variety of products with the aim of giving patients the ultimate care they deserve. EgiFix Medical offers innovative solutions in spine surgery, Arthroplasty and trauma fixation.

Cairo-based EgiFix was founded in 2002. With two manufacturing premises.

We have been writing a success story for 20 years - and counting.

# Table of content

Introduction	4
Stem	5
Cemented stem	6
Cementless long stem	7
Cementless stem	8
Cementless long stem	9
Straight stem	10
Cemented stem	10
Cementless stem	11
Head	12
Cup	13
Bipolar Cup	14
Cementless Acetabular Cup	15
Cemented Acetabular Cup	16
Revision Cup Implant	17
Instrument set	18
Ref Codes	24

# Introduction

A complete solution according to patient needs and doctors' preferences are available for doctors uses

## Indication

- Total Hip
  - Severely painful or disabled joint from Osteoarthritis, traumatic arthritis, rheumatoid arthritis, or congenital hip dysplasia.
  
- Total or Partial Hip
  - Avascular necrosis of the femoral head.
  - Acute traumatic fracture of the femoral head or neck.
  - Failed previous hip surgery including joint reconstruction, internal fixation, arthrodesis, hemiarthroplasty, or total hip replacement.
  - Certain cases of ankylosis.

# Stem

## Cemented Stem

### Material

- Casted Co-Cr alloy that has a long record of clinical success with increased material strength

### Neck:

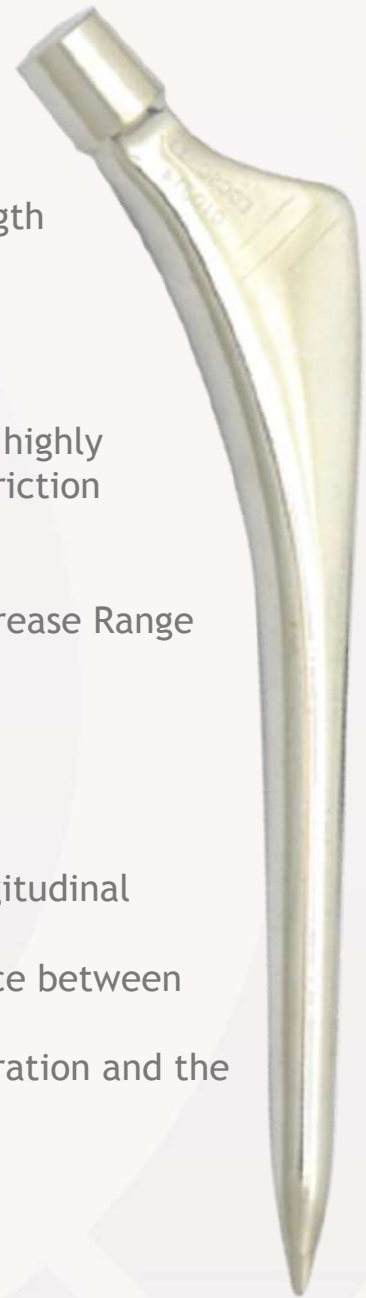
- Neck angle incorporate a 135 degree which is highly polished to decrease grinding caused by the friction between stem neck and UHMWPE component
- Standard Offsets
- Reduced proportionate Neck Geometry to increase Range of motion

### Design

- Biplanar taper without collar convert the longitudinal shear force to lateral compression force
- Highly polished surface reduces the shear force between prosthesis and the bone cement
- Smooth prosthesis edge avoids stress concentration and the cutting the bone cement
- Collarless
- Head 12/14 taper

### Size

- 7 available sizes with length starting from 130mm to 155mm



# Cemented Long stem

## Material

- Casted Co-Cr alloy that has a long record of clinical success with increased material strength

## Neck:

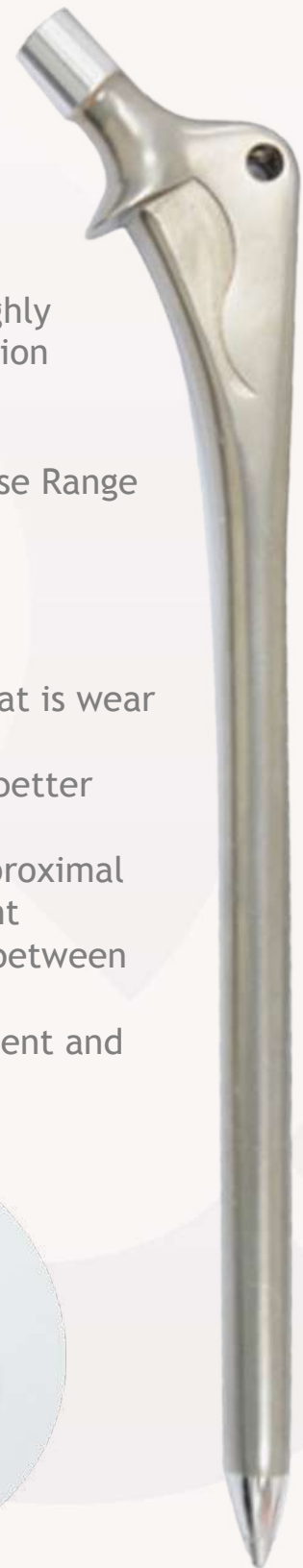
- Neck angle incorporate a 135 degree which is highly polished to decrease grinding caused by the friction between stem neck and UHMWPE component
- Standard Offsets
- Reduced proportionate Neck Geometry to increase Range of motion

## Design

- Cemented stem BC is made of Co-Cr- Mo alloy that is wear resistant
- Biplanar stem taper resistant to sinking and has better stress distribution
- Collar provides an enclosed environment in the proximal and helps positions and supports the bone cement
- Highly polished surface reduces the shear force between prosthesis and the bone cement
- A 45-degree collar provide an enclosed environment and provide support and settlement of the stem
- Head 12/14 taper

## Size

- 7 available sizes



## Cementless Stem

### Material

- Forged Titanium Ti6Al4V Eli

### Neck:

- Neck angle incorporate a 135 degree which is highly polished to decrease grinding caused by the friction between stem neck and UHMWPE component
- Standard Offsets
- Reduced proportionate Neck Geometry to increase Range of motion

### Design

- Distal Grooves for enhanced rotational stability
- Partial and fully Titanium Coating for increase osteointegration
- Distal bullet tip succeeds in avoiding stress shielding
- Collarless
- Head 12/14 taper

### Size

- 8 available sizes

### Coating

- Titanium Coating





# Cementless Long Stem

## Material

- Forged Titanium Ti6Al4V Eli

## Neck:

- Neck angle incorporate a 135 degree which is highly polished to decrease grinding caused by the friction between stem neck and UHMWPE component
- Standard Offsets
- Reduced proportionate Neck Geometry to increase Range of motion

## Design

- Long stem 250mm has anterior bowing to accommodate the normal anatomy of the canal
- Reduced proportionate Neck Geometry to increase Range of motion
- Full Titanium coating for complete osteointegration
- Collarless
- Head 12/14 taper

## Size

- 150mm length with 10 sizes
- 200mm length with 10 sizes
- 250mm Right and Left with 9 sizes

## Coating

- Titanium Coating



# Straight Stem Design

## Cemented stem

### Material

- High Nitrogen Steel

### Neck:

- Neck angle incorporate a 135 degree which is highly polished to decrease grinding caused by the friction between stem neck and UHMWPE component
- Standard Offsets
- Reduced proportionate Neck Geometry to increase Range of motion

### Design

- Available in collarless and collared design
- Highly polished surface reduces the shear force between prosthesis and the bone cement
- Smooth prosthesis edge avoids stress concentration and the cutting the bone cement
- Reduced proportionate Neck Geometry to increase Range of motion
- Head 12/14 taper

### Sizes

- Available in 8 diameters
- With height starting from 130mm to 180mm



# Cementless stem

## Material

- Forged Titanium

## Neck:

- Neck angle incorporate a 135 degree which is highly polished to decrease grinding caused by the friction between stem neck and UHMWPE component
- Standard Offsets
- Reduced proportionate Neck Geometry to increase Range of motion

## Design

- Collarless
- Proximal Trapezoid cross section and distal quadrangular section to provide rotational stability
- Vertical and Horizontal Groove to enhance rotational and axial stability
- Reduced proportionate Neck Geometry to increase Range of motion
- Head 12/14 taper

## Coating

- HA coated

## Sizes

- Available in 8 diameters
- With height starting from 130mm to 180mm



# Head

## Design

- Highly polished head
- Taper 12/14

## Material

- SS 316 LVM
- Co-Cr

## Sizes

- Diameter 22,28,32,36mm
- High Modularity with 6 length
  - -6, -3, 0, 3, 6, 9





Cup

## Bipolar Cup

### Material

- Made from Co-Cr-Mo alloy with mirror polish, which reduce friction coefficient to the minimum extent

### Design

- Two center design ensure the hip joint the greatest motion range with lowest wear
- A wide liner chamfer allows maximum Range of Motion
- Easy implant assembly with no extra tools just average finger pressure

### Locking design

- Easy to install and avoid head dislocation. Push with the key when revision surgery is needed or the ball should be changed

### Sizes

- Diameter 38 and 40 that works with Head 22
- Diameter 42 to 60 that fits with Head 28



# Cementless Acetabular cup

## Material

- Forged of Titanium Alloy that has high strength, light specific weight and elastic modulus
- Liner of UHMWPE with higher abrasive resistance

## Design

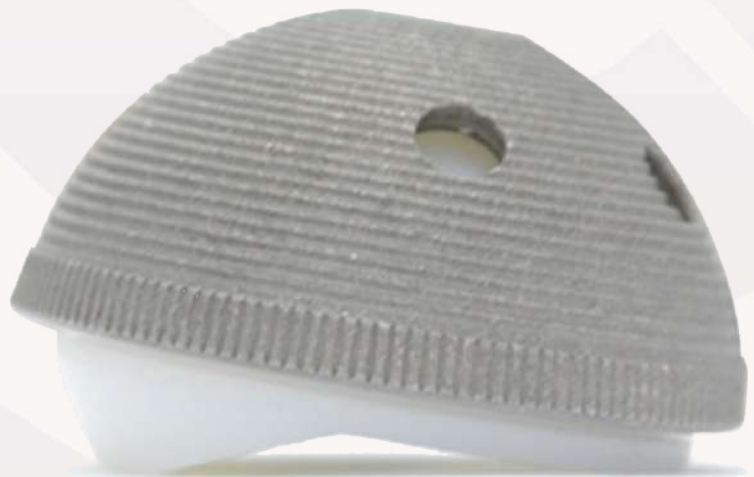
- Circle grooves increase surface with bone and enhance pull-out strength
- Excellent biological compatibility
- Strengthens fixation with titanium screws
- Multi radius design and longitudinal grooves with taper pre-fit make the shell engage tightly and bone with good anti-rotation
- 10 degrees dislocation insert

## Coating

- Ti coating

## Size

- Diameter 42 and 44 that fits in Head 22
- Diameter 46 to 62 that fits head 28
- Head 32 can be used with cup 50 to 54
- Head 36 can be used with cups from 56 to 62



## Cemented Acetabular Cup

### Material

- A polyethylene acetabular cup made of UHMWPE

### Design

- Circle grooves increase contact with bone cement
- Internal rim is cut to expand joint motion range and decrease collision with the stem
- Metal ring along the rim will produce radiolucent line and helps locate precisely
- Anti-deslocation design
- The anti-dislocation liner can be implanted into the best position by rotation, that leads to fewer complications after operation. Both shell and liner adapt a biconical surface design to match tight
- This design could prevent relatively slip which bring polyethelene debris

### Size

- Diameter 42 to 60 that fits with Head 28





## Revision Cup Implants

### Material

- Titanium Alloy

### Coating

- Titanium Coating

### Design

- Titanium Coating

### Size

- One Size Cup



## Instrument set

- Quick and easy to use instrumentation set
- Broach
  - Compressing and compacting the cancellous bone preserving the canal endosteum for
  - Broaches have depth indicator that corresponds to the depth indicator marking on the final implant (5mm apart)

### Instrument List

No.	Name	Spec	Ref Code	Qty	Pic
1	Osteotomy Guide (60 degrees)			1	
2	Cork Screw / Femoral Head Remover			1	
3	Femoral Head Sizing Guide			2	
4	Acetabular Reamer	42		1	
		44		1	
		46		1	
		48		1	
		50		1	
		52		1	
		54		1	
		56		1	
		58		1	
60		1			
	Acetabular Reamer Handle			1	
6	Trial Cups	42		1	
		44		1	
		46		1	
		48		1	

50	1
52	1
54	1
56	1
58	1
60	1



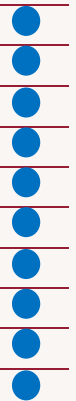
7 Trial Cup Handle

1



8 Trial Liner (Total Hip)

42	1
44	1
46	1
48	1
50	1
52	1
54	1
56	1
58	1
60	1



9 Trial Liner (Bi-polar)

38	1
40	1
42	1
44	1
46	1
48	1
50	1
52	1
54	1



10 Trial Liner Handle





1










11 Cup Handle (with two head)

1



12	Angle Gauge	1		<input type="checkbox"/>
13	Angle Gauge Rods	2		<input type="checkbox"/>
14	Flexi Drill Bit	2		<input type="checkbox"/>
15	Drilling Guide	1		<input type="checkbox"/>
16	Depth Gauge	1		<input type="checkbox"/>
17	Flexi Screw Driver	1		<input type="checkbox"/>
18	Screw Holder Clamp	1		<input type="checkbox"/>
19	Box Chisel	1		<input type="checkbox"/>
20	Blunt Medullary Reamer	7	1	<input type="checkbox"/>
		8	1	<input type="checkbox"/>
		9	1	<input type="checkbox"/>
		10	1	<input type="checkbox"/>
		11	1	<input type="checkbox"/>

		12	1		
		13	1		
		14	1		
		15	1		
		16	1		
22	Broach Handle		1		
		9	1		
		10	1		
		11	1		
23	Broach (135 comes in sizes 9-16)	12	1		
		13	1		
		14	1		
		15	1		
		16	1		
24	Calcar Reamer		1		
25	Trial Neck (Angle Taper 12/14 Degrees)		1		
		28/-6	1		
		28/-3	1		
26	28 Trial Femoral Heads	28/0	1		
		28/3	1		
		28/6	1		
		28/9	1		
		22/0	1		
27	22 Trial Femoral Heads (	22/3	1		
		22/6	1		
		22/9	1		
28	Femoral Head Impactor		1		

29	Trial Head Extractor		1	
		22	1	
30	Insert Handle	28	1	
31	Stem Inserter(round end)		1	
	Stem Inserter-A(thread end)		1	
33	Quick Connector		1	
34	Impactor		1	
35	T-Type Handle		1	
36	Free Handle		1	

37

Ring Remover

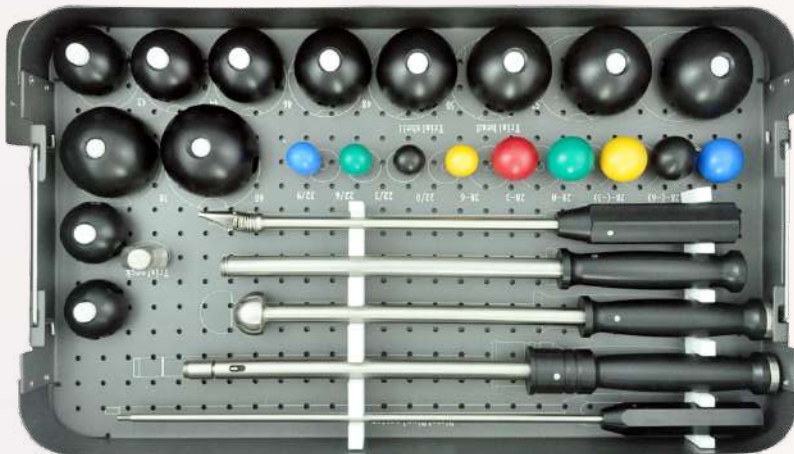
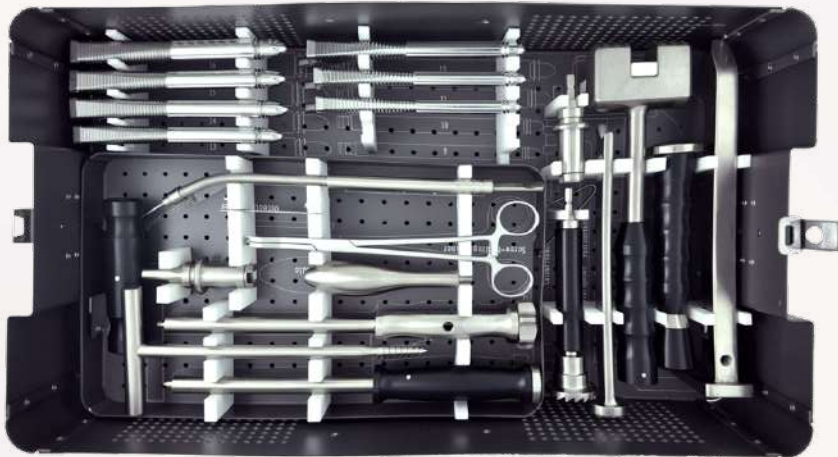
1



38

Cement Restrictor

1



## Ref Code

### Cemented stem Cobalt Chrome EGH-SCA



size	Ref
9	EGH-SCA 09
10	EGH-SCA 10
11	EGH-SCA 11
12	EGH-SCA 12
13	EGH-SCA 13
14	EGH-SCA 14
15	EGH-SCA 15

### Cemented Long stem Cobalt Chrome With Collar EGH-SCLA



size	Ref
9	EGH-SCLB 9
10	EGH-SCLB 10
11	EGH-SCLB 11
12	EGH-SCLB 12
13	EGH-SCLB 13
14	EGH-SCLB 14
15	EGH-SCLB 15

### Cemented Long stem Cobalt Chrome Without Collar EGH-SCLA



size	Ref
9	EGH-SCLA 9
10	EGH-SCLA 10
11	EGH-SCLA 11
12	EGH-SCLA 12
13	EGH-SCLA 13
14	EGH-SCLA 14



15

EGH-SCLA 15

## Cementless stem



size	Ref
9	EGH-STA-F 9
10	EGH-STA-F 10
11	EGH-STA-F 11
12	EGH-STA-F 12
13	EGH-STA-F 13
14	EGH-STA-F 14
15	EGH-STA-F 15
16	EGH-STA-F 16

## Cementless Long stem

size	130mm	145mm	150mm
9	EGH-STLA-F 9.130	EGH-STLA-F 9.145	EGH-STLA-F 9.150
10	EGH-STLA-F 10.130	EGH-STLA-F 10.145	EGH-STLA-F 10.150
11	EGH-STLA-F 11.130	EGH-STLA-F 11.145	EGH-STLA-F 11.150
12	EGH-STLA-F 12.130	EGH-STLA-F 12.145	EGH-STLA-F 12.150
13	EGH-STLA-F 13.130	EGH-STLA-F 13.145	EGH-STLA-F 13.150
14	EGH-STLA-F 14.130	EGH-STLA-F 14.145	EGH-STLA-F 14.150
15	EGH-STLA-F 15.130	EGH-STLA-F 15.145	EGH-STLA-F 15.150

size	200 mm		250mm	
	Right	Left	Right	Left
9	EGH-STLA-F 9.200 R	EGH-STLA-F 9.200 L	-----	-----
10	EGH-STLA-F 10.200 R	EGH-STLA-F 10.200 L	EGH-STLA-F 10.250 R	EGH-STLA-F 10.250 L
11	EGH-STLA-F 11.200 R	EGH-STLA-F 11.200 L	-----	-----
12	EGH-STLA-F 12.200 R	EGH-STLA-F 12.200 L	EGH-STLA-F 12.250 R	EGH-STLA-F 12.250 L
13	EGH-STLA-F 13.200 R	EGH-STLA-F 13.200 L	-----	-----
14	EGH-STLA-F 14.200 R	EGH-STLA-F 14.200 L	EGH-STLA-F 14.250 R	EGH-STLA-F 14.250 L
15	-----	-----	-----	-----
16	EGH-STLA-F 16.200 R	EGH-STLA-F 16.200 L	EGH-STLA-F 16.250 R	EGH-STLA-F 16.250 L

18	EGH-STLA-F 18.200 R	EGH-STLA-F 18.200 L	EGH-STLA-F 18.250 R	EGH-STLA-F 18.250 L
20	EGH-STLA-F 20.200 R	EGH-STLA-F 20.200 L	EGH-STLA-F 20.250 R	EGH-STLA-F 20.250 L

### Cemented stem Stainless steel without collar EGH-SSA



size	Ref
1	EGH-SSA 1
2	EGH-SSA 2
3	EGH-SSA 3
4	EGH-SSA 4
5	EGH-SSA 5
6	EGH-SSA 6
7	EGH-SSA 7
8	EGH-SSA 8
9	EGH-SSA 9

### Cemented stem Stainless steel with collar EGH-SSA



size	Ref
1	EGH-SSB 1
2	EGH-SSB 2
3	EGH-SSB 3
4	EGH-SSB 4
5	EGH-SSB 5
6	EGH-SSB 6
7	EGH-SSB 7
8	EGH-SSB 8
9	EGH-SSB 9

### Cementless stem with HA Coating EGH-STB-H



size	Ref
1	EGH-STB-H 1
2	EGH-STB-H 2
3	EGH-STB-H 3
4	EGH-STB-H 4
5	EGH-STB-H 5
6	EGH-STB-H 6
7	EGH-STB-H 7

8	EGH-STB-H 8
9	EGH-STB-H 9

## Head

### Head Cobalt Chrome. EGH-HC

	-6	-3	0	3	6	9
φ22	----	----	EGH-HC 22/0	EGH-HC 22/3	EGH-HC 22/6	EGH-HC 22/9
φ28	EGH-HC 28/-6	EGH-HC 28/-3	EGH-HC 28/0	EGH-HC 28/3	EGH-HC 28/6	EGH-HC 28/9
φ32	EGH-HC 32/-6	EGH-HC 32/-3	EGH-HC 32/0	EGH-HC 32/3	EGH-HC 32/6	EGH-HC 32/9
φ36	EGH-HC 36/-6	EGH-HC 36/-3	EGH-HC 36/0	EGH-HC 36/3	EGH-HC 36/6	EGH-HC 36/9

### Head Stainless steel EGH-HS

	-6	-3	0	3	6	9
φ22	----	----	EGH-HS 22/0	EGH-HS 22/3	EGH-HS 22/6	EGH-HS 22/9
φ28	EGH-HS 28/-6	EGH-HS 28/-3	EGH-HS 28/0	EGH-HS 28/3	EGH-HS 28/6	EGH-HS 28/9
φ32	EGH-HS 32/-6	EGH-HS 32/-3	EGH-HS 32/0	EGH-HS 32/3	EGH-HS 32/6	EGH-HS 32/9
φ36	EGH-HS 36/-6	EGH-HS 36/-3	EGH-HS 36/0	EGH-HS 36/3	EGH-HS 36/6	EGH-HS 36/9

### Bipolar Cup Cobalt Chrome EGH-CBC



	Ref	Notes
φ38	EGH-CBC 38/22	Head Diameter 22mm
φ40	EGH-CBC 40/22	Head Diameter 22mm
φ42	EGH-CBC 42/28	Head Diameter 28mm
φ44	EGH-CBC 44/28	Head Diameter 28mm
φ46	EGH-CBC 46/28	Head Diameter 28mm
φ48	EGH-CBC 48/28	Head Diameter 28mm
φ50	EGH-CBC 50/28	Head Diameter 28mm
φ52	EGH-CBC 52/28	Head Diameter 28mm
φ54	EGH-CBC 54/28	Head Diameter 28mm
φ56	EGH-CBC 56/28	Head Diameter 28mm
φ58	EGH-CBC 58/28	Head Diameter 28mm
φ60	EGH-CBC 60/28	Head Diameter 28mm

### Bipolar Cup Stainless steel EGH-CBS



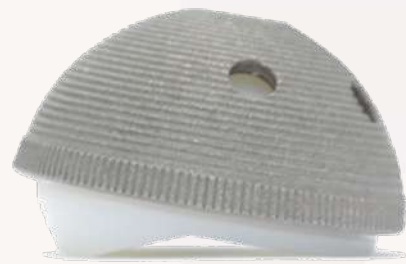
	Ref	Notes
φ38	EGH-CBS 38/22	Head Diameter 22mm
φ40	EGH-CBS 40/22	Head Diameter 22mm
φ42	EGH-CBS 42/28	Head Diameter 28mm
φ44	EGH-CBS 44/28	Head Diameter 28mm
φ46	EGH-CBS 46/28	Head Diameter 28mm
φ48	EGH-CBS 48/28	Head Diameter 28mm
φ50	EGH-CBS 50/28	Head Diameter 28mm
φ52	EGH-CBS 52/28	Head Diameter 28mm
φ54	EGH-CBS 54/28	Head Diameter 28mm
φ56	EGH-CBS 56/28	Head Diameter 28mm
φ58	EGH-CBS 58/28	Head Diameter 28mm
φ60	EGH-CBS 60/28	Head Diameter 28mm

## Cemented Cup EGH-CC



Size	Ref
Φ42	EGH-CC 42
Φ44	EGH-CC 44
Φ46	EGH-CC 46
Φ48	EGH-CC 48
Φ50	EGH-CC 50
Φ52	EGH-CC 52
Φ54	EGH-CC 54
Φ56	EGH-CC 56
Φ58	EGH-CC 58
Φ60	EGH-CC 60

## Cementless Cup EGH-CT-T



	Standard Head		Large Head	
	Ref.	Head Size	Ref.	Head Size
Φ42	EGH-CT-T 42/22	Head 22mm	----	----
Φ44	EGH-CT-T 44/22	Head 22mm	----	----
Φ46	EGH-CT-T 46/28	Head 28mm	----	----
Φ48	EGH-CT-T 48/28	Head 28mm	----	----
Φ50	EGH-CT-T 50/28	Head 28mm	----	----
Φ52	EGH-CT-T 52/28	Head 28mm	EGH-CT-T 50/32	Head 32mm
Φ54	EGH-CT-T 54/28	Head 28mm	EGH-CT-T 52/32	Head 32mm
Φ56	EGH-CT-T 56/28	Head 28mm	EGH-CT-T 54/32	Head 36mm
Φ58	EGH-CT-T 58/28	Head 28mm	EGH-CT-T 56/36	Head 36mm
Φ60	EGH-CT-T 60/28	Head 28mm	EGH-CT-T 58/36	Head 36mm
Φ62	EGH-CT-T 62/28	Head 28mm	EGH-CT-T 60/36	Head 36mm







**E-mail:**[info@egifix.com](mailto:info@egifix.com)  
**website:**[www.egifix.com](http://www.egifix.com)